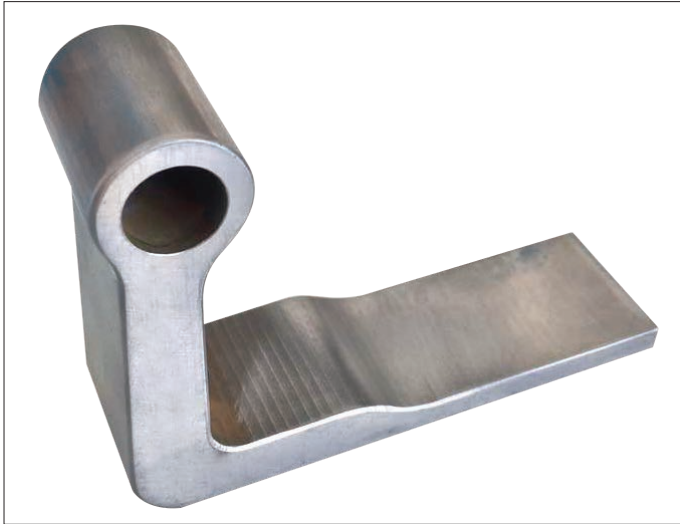


汽车车门铰链夹具案例

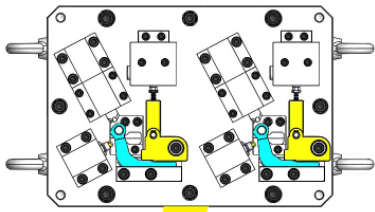
Door Hinge Fixture Solution for Automotive Products



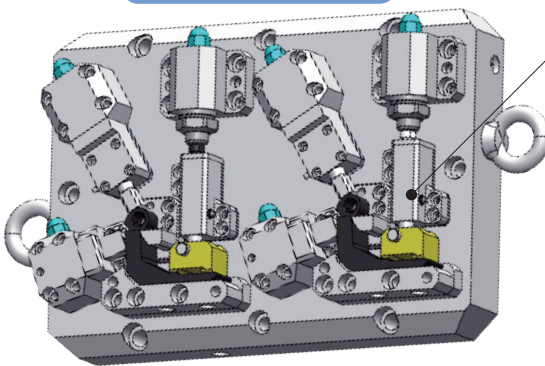
工件名称	车门铰链
材料	型钢
加工内容	钻孔, 铣面, 粗铣, 精铣, 镗孔, 精镗
Workpiece	Door hinge
Material	Profile steel
Machining job	Drilling, milling, rough milling, fine milling, boring, fine boring

车门铰链夹具 Door Hinge Fixture

原夹具
Original fixture




设计优化后夹具
After optimization



优化后特点
Special features

- 优化预定位机构, 重复夹持更稳定。
New pre-positioning system creates stability of clamping.
- 人工上料更方便, 提高效率与操作安全。
More convenient upload system, improving the efficiency and safety of operation.

设计优化
Design optimization

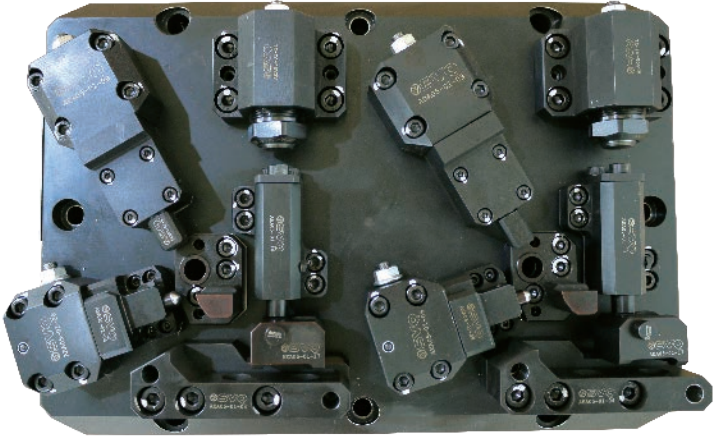


产品描述与特征：

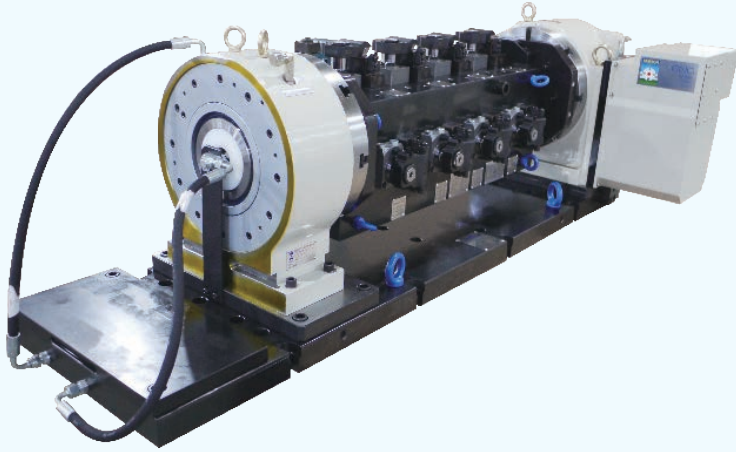
- 精度要求：± 0.01mm
- 使用机床：6 转台专用机床
- 外型定位
- 双工位夹具
- 特殊预定位机构

Product Description and Characteristics:

- Machining accuracy: ± 0.01mm
- Machining center: 6 pallets special machine center
- Shape positioning
- 2 clamping nests
- Special pre-position system



车门铰链夹具 Door Hinge Fixture



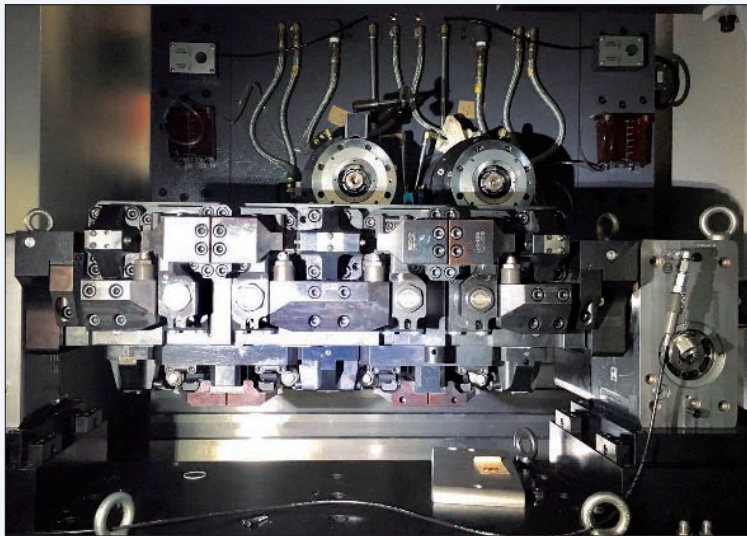
产品描述与特征：

- 精度要求： $\pm 0.01\text{mm}$
- 使用机床：6 转台专用机床
- 外型定位
- 八工位夹具搭配分度盘（第四轴）

Product Description and Characteristics:

- Machining accuracy: $\pm 0.01\text{mm}$
- Machining center: 6 pallets special machine center
- Shape positioning
- 8 clamping nests with rotary table (the fourth axis)

车门铰链夹具 Door Hinge Fixture



产品描述与特征：

- 精度要求： $\pm 0.01\text{mm}$
- 使用机床：6 转台专用机床
- 外型定位
- 八工位夹具搭配分度盘（第四轴）

Product Description and Characteristics:

- Machining accuracy: $\pm 0.01\text{mm}$
- Machining center: 6 pallets special machine center
- Shape positioning
- 8 clamping nests with rotary table (the fourth axis)

车门铰链夹具 Door Hinge Fixture



产品描述与特征：

- 精度要求： $\pm 0.01\text{mm}$
- 使用机床：6 转台专用机床
- 外型定位
- 八工位夹具搭配分度盘（第四轴）

Product Description and Characteristics:

- Machining accuracy: $\pm 0.01\text{mm}$
- Machining center: 6 pallets special machine center
- Shape positioning
- 8 clamping nests with rotary table (the fourth axis)