

刀具夹具总包案例

Whole Package Service with Cutting Tools and Fixture for Automotive Products



工件名称

车用电动方向机马达壳体, 齿轮箱端盖

材料

ADC12 (AlSi11Cu3)

加工内容

粗铣面, 精铣面, 镗孔, 精镗孔, 钻孔, 攻丝

Workpiece

Electric power steering motor housing gear box cover

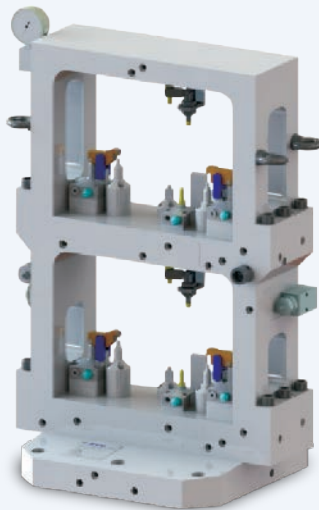
Material

ADC12 (AlSi11Cu3)

Machining job

Rough milling, finished milling, boring, fine boring, drilling, tapping

车用电动方向机壳体夹具 EPS Housing Fixture



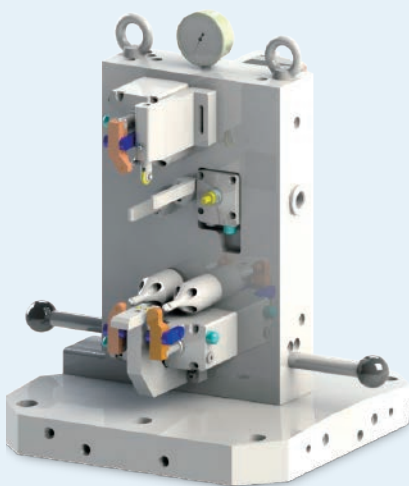
产品描述与特征：

- 精度要求：± 0.01mm
- 使用机床：卧式加工中心
- 球头销定位
- 双工位夹具
- 刀具夹具总包服务

Product Description and Characteristics:

- Machining accuracy: ± 0.01mm
- Machining center: Horizontal machine center
- Ball pin positioning
- 2 clamping nests
- Whole package service of cutting tools and fixture

车用电动方向机壳体夹具 EPS Housing Fixture



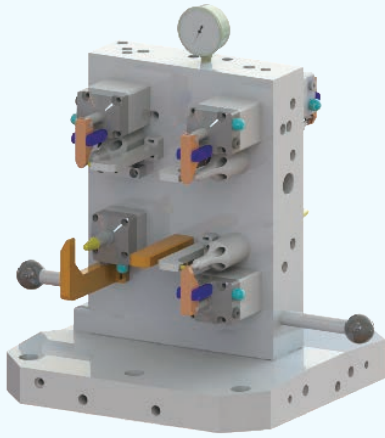
产品描述与特征：

- 精度要求：± 0.01mm
- 使用机床：卧式加工中心
- 球头销定位
- 双工位夹具
- 刀具夹具总包服务

Product Description and Characteristics:

- Machining accuracy: ± 0.01mm
- Machining center: Horizontal machine center
- Ball pin positioning
- 2 clamping nests
- Whole package service of cutting tools and fixture

车用电动方向机马达壳体夹具 EPS Housing Fixture



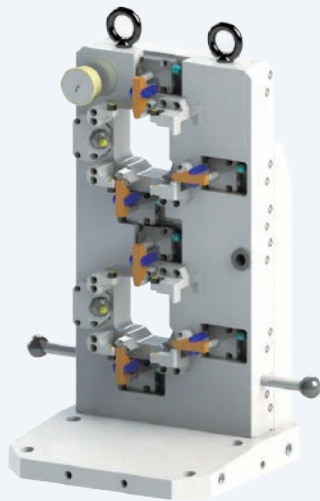
产品描述与特征：

- 精度要求：± 0.01mm
- 使用机床：卧式加工中心
- 球头销定位
- 双工位夹具
- 刀具夹具总包服务

Product Description and Characteristics:

- Machining accuracy: ± 0.01mm
- Machining center: Horizontal machine center
- Ball pin positioning
- 2 clamping nests
- Whole package service of cutting tools and fixture

齿轮箱端盖夹具 Gear box Cover Fixture



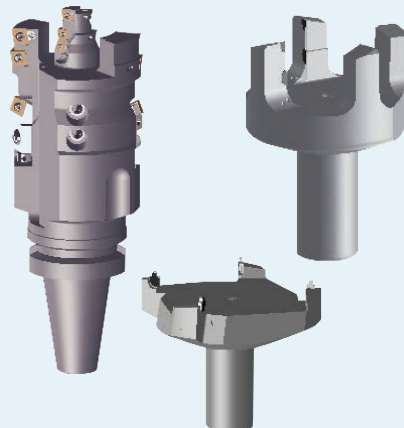
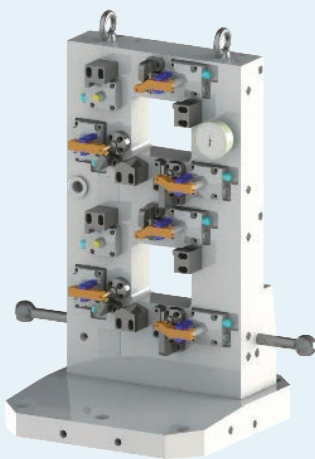
产品描述与特征：

- 精度要求：± 0.01mm
- 使用机床：卧式加工中心
- 球头销定位
- 双工位夹具
- 刀具夹具总包服务

Product Description and Characteristics:

- Machining accuracy: ± 0.01mm
- Machining center: Horizontal machine center
- Ball pin positioning
- 2 clamping nests
- Whole package service of cutting tools and fixture

齿轮箱端盖夹具 Gear box Cover Fixture



产品描述与特征：

- 精度要求：± 0.01mm
- 使用机床：卧式加工中心
- 球头销定位
- 双工位夹具
- 刀具夹具总包服务

Product Description and Characteristics:

- Machining accuracy: ± 0.01mm
- Machining center: Horizontal machine center
- Ball pin positioning
- 2 clamping nests
- Whole package service of cutting tools and fixture